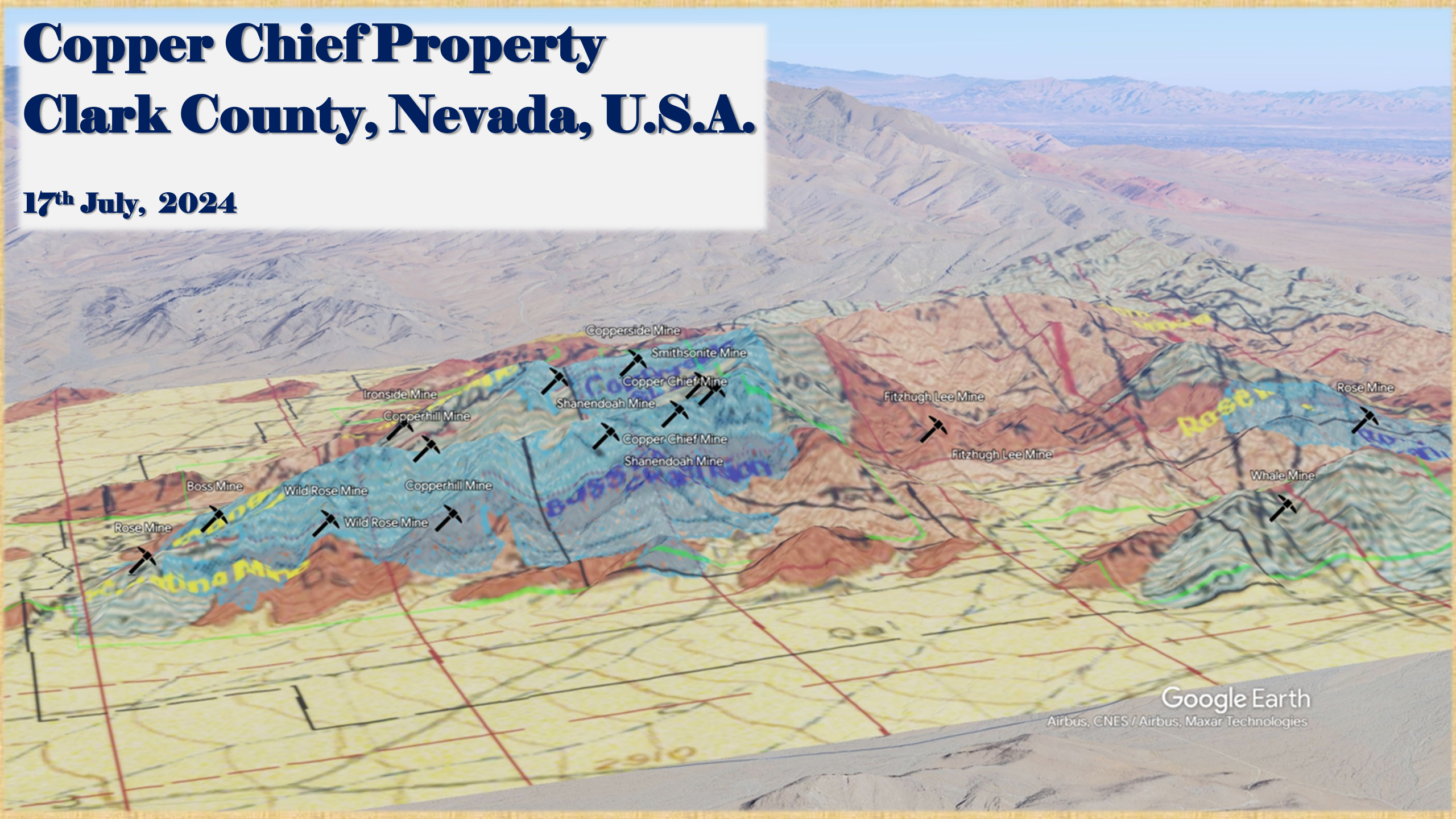


Copper Chief Property Clark County, Nevada, U.S.A.

17th July, 2024



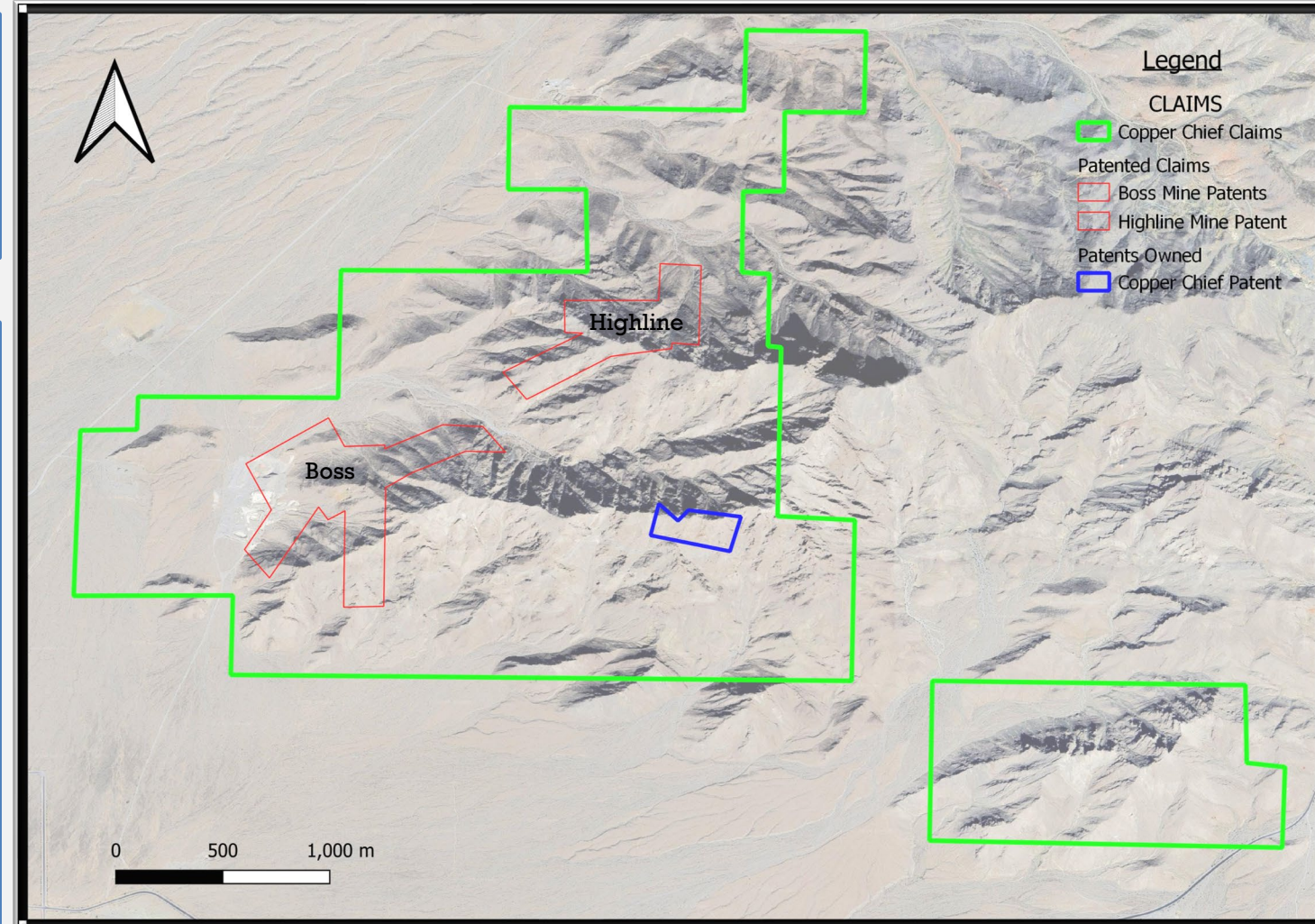
Option and Claims

Goodsprings Exploration LLC

- Goodsprings Exploration has the exclusive option to earn up to 90% of the Copper Chief Project over 8 years
*refer to deal terms

Copper Chief Project

- 103 lode claims and a 15.8 acre patented Cu-Au mine in Goodsprings, Nevada. Cu-Mo-Au-Ag-Palladium-Platinum-Iridium-Rhodium-Cobalt.
- Contains 10+ past-producing small mines of High-Grade Copper-Moly, Gold, PGEs, and Cobalt.
- Cu-Au mineralized skarns at the surface and drill core-indicated skarn Cu-Mo-Au.
- Cu-Au-Pd-Pt-Iridium-Rhodium pipe/vein targets on the border of the interpreted porphyry system.



Proximity to Las Vegas Logistics and Accessibility

Transportation:

- Access to major transportation routes (highways, railroads).
- 35 kms from Las Vegas, NV
- Paved Highway access directly to site.

Infrastructure:

- Well-developed infrastructure (A few miles from the town of Sandy Valley)
- (roads, airports, utilities).

Workforce:

- Labor Pool: Access to a larger and potentially more skilled labor pool.
- Contracting directly from Las Vegas, NV.

Services and Suppliers:

- Local Suppliers: Availability of necessary services and supplies from Las Vegas

Permitting

- Nevada is known as the 'best' state for permitting
- Unpopulated property area

Southern Nevada



Google Earth 2024

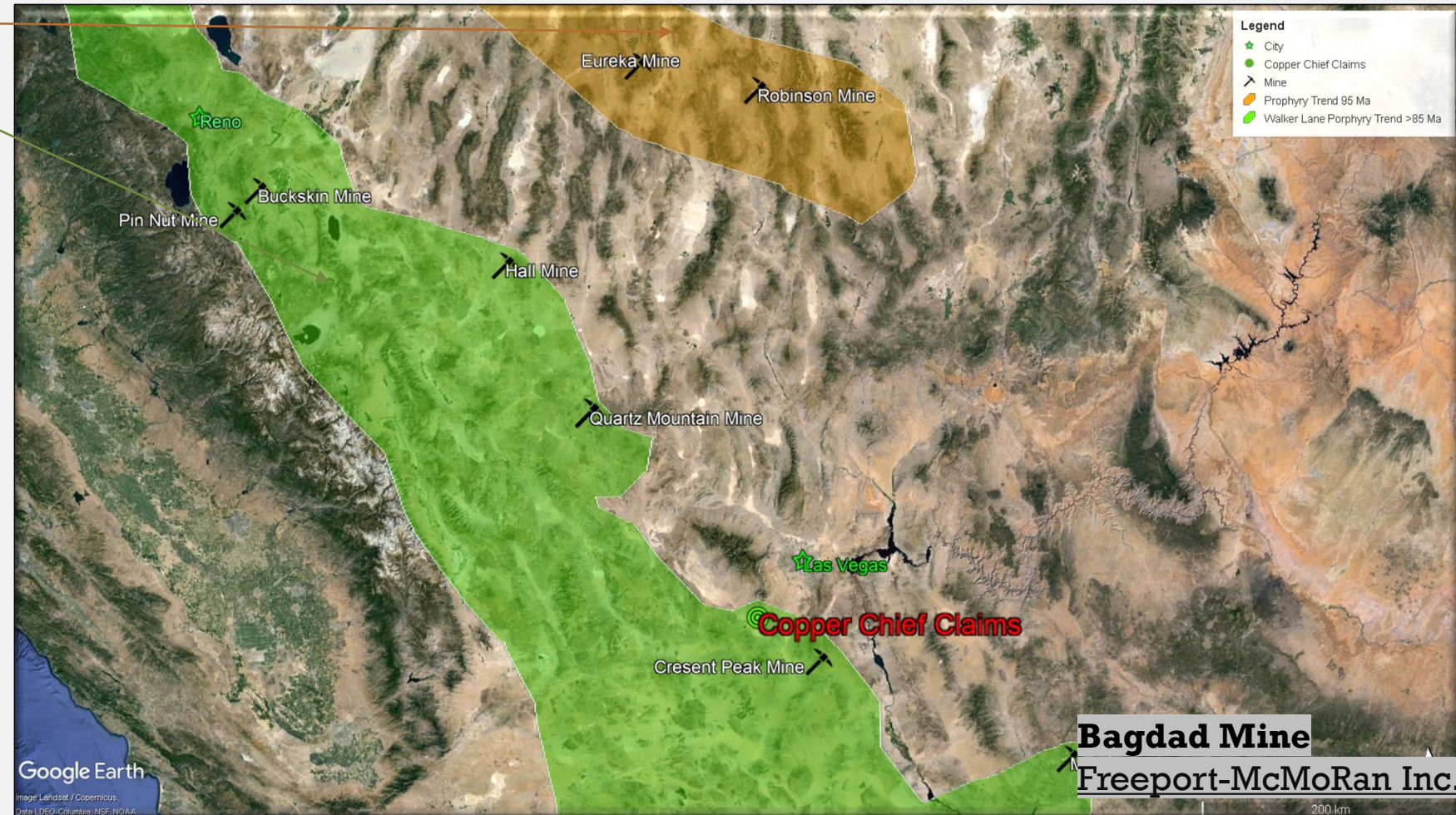
Porphyry Trends

Porphyry Belts

- **Laramide Belt** (95 -120 Ma old)
- **Walker Lane Belt** (< 85 Ma old)

Past producers

- **Bagdad Mine:** *Porphyry Cu-Mo*
 - **5th ranked** in the world in overall Cu Porphyry mines
 - Operated by **Freeport-McMoRan Inc.**
 - 2023 reserves:
 - Copper 15.9 Billion Pounds
 - Gold 0.2 Moz
 - Molybdenum 0.89 Billion Pounds
 - Est Production (2024)
 - 4.1 million pounds Cu
 - 2.0 Moz Au
 - 85 million pounds Moly
 - Operation from 1924-2111 (est) (From Annual Report)
- **Robinson Mine:** *Porphyry Au-Cu*
 - 250 Mt @ 1.1% Cu, 2.7 Moz Au @ 0.4 g/t
 - Resources: 2011, NI-43-101. QuadraFNX: 900Mt @ 0.27-0.51% Cu, 0.15 g/t Au for 2.1 Bt Cu & 1.2 Moz Au
- **Hall Mine:** *Porphyry Cu-Au-Mo*
 - 1970 (Anaconda Mining): 123 Mt @ 0.126% MoS₂
 - 1999 (Equatorial Mining): 140 Mt @ 0.314% Cu
 - Mo extends from surface down to 400 m



Historical Background

1898:

- Mill constructed for the Boss Mine.

1910:

- Development of the Yellow Pine mine, the largest mine in the Goodsprings district.

1921:

- Cobalt mining at the Copper Chief mine during the cobalt rush, with significant shipments of high-grade cobalt ore.

1931:

- Publication of USGS Professional Paper 162 by Hewett, documenting the district's mining history up to that time.

1944:

- By this time, the district's mines had produced significant quantities of zinc, lead, copper, silver, and gold, and cobalt.

1957:

- Mining in the district wound down with the end of production at the Potosi mine.



Key Production Figures by 1944:

Zinc:	• Approximately 93,000 tons.
Lead:	• Approximately 37,000 tons.
Copper:	• Approximately 1,657 tons.
Silver:	• Approximately 1,798,000 ounces.
Gold:	• Approximately 12,140 ounces.
Cobalt:	• At least 8,590 pounds by the time of the cobalt rush in 1921.

Historic Mines in Property Area

Copper Chief

- Cu-Au-Zn-Pb-Co
- Copper Chief PCD Target is in Middle Paleozoic **limestones** that were intruded by Triassic granitic bodies
- **Skarn Cu-Mo-Au-Ag and a possible Porphyry system.**

Sandy Mines

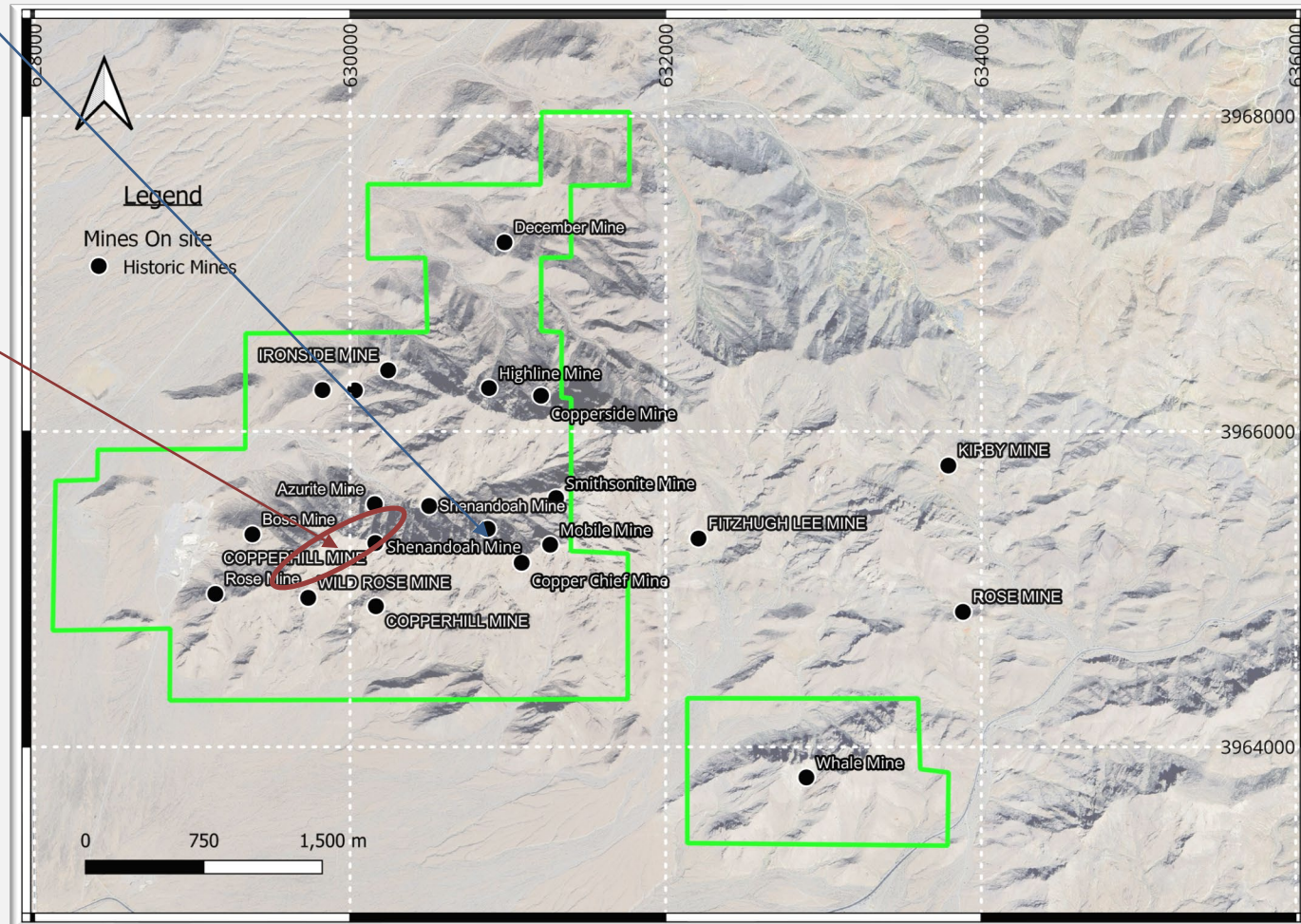
- Au-Ag-Cu
- Sandy Pipe/Veins Au-Ag-PGEs
- Target next to high-grade Boss Gold-Ag-Pd-Pt Mine is in a major **600m wide, 5 km long fault zone network.**

Copperside Mine

- Cu-Mo-Au-Ag
- Manto-Style deposit
- **High-grade Cu-Au Manto & Porphyry Cu-Au target.**

Ironside Fault Mines

- Au-Ag-Pd-Pt-Rh-Ir-Co
- Ironside Mine veins Au-PGEs-Cobalt pipe target



Boss Mine

- Au-Ag-Pd-Pt-Cu

Azurite

- Cu-Mo-Au-Ag

Sandy Mines

- Au-Ag-Cu

Rosella South

- Cu-Mo-Au-Ag

Manse E Ext.

- Cu-Mo-Au-Ag

Knickerbocker

- Au-Ag

December Mine

- Au-Ag

Oro Amigo E Ext.

- Au-Ag-PGE

Wild Rose

- Au-Ag

Platina

- Au-PGEs?

Valley View

- Au-Ag

Mobile

- Zn-Pb-Ag

Highline Mine

- Cu-Au-Co

Shenandoah Mine

- Zn-Pb

Smithsonite Mine

- Zn-Pb-Co

Whale Mine

- Zn-Pb-Ag-Co

Recent Exploration

1990-1992:

- Durvada Resources Ltd.:
 - 6,000-foot reverse-circulation drilling program.
 - Produced 1,100 ounces of gold.
- Asarco:
 - drilled at least two holes for gold exploration.

2000-2001:

- Renegade Exploration Co.:
 - Conducted regional geological and geophysical data interpretation.

2001-2002:

- 3AE:
 - Exploration for carbonate-hosted, Carlin-type gold mineralization.
 - Geological mapping, IP-Resistivity survey, magnetometer survey, soil sampling, and diamond drilling program.

2003-2012:

- Boxxer Gold:
 - Grid-controlled geological mapping, soil/silt/chip sampling, and ground geophysical survey.
 - 615 meters of core drilling in 6 holes.
 - High-resolution airborne magnetic, electromagnetic, and radiometric surveys.
 - Three Titan-24 electromagnetic surveys.
 - Mapping and systematic channel sampling of old mines, adits, and pits.
 - Drilled 306.1 meters in 6 holes in 2009 and 11 diamond drill holes totaling 5,148.8 meters between 2010 and 2012.

Significant Assays

Boss Extension skarn area:

- 37.10 meters at 0.27% Cu, 0.04 g/t Au, and 3.03 g/t Ag; including 3.3 meters at 1.45% Cu, 0.02 g/t Au, and 18.0 g/t Ag

Copper Chief Mine:

- Mined for high-grade Cu+Au and Pb+Zn and Cobalt (to 1.13% Co)

Copperside Mine:

- Manto mined for high-grade Cu+Au
- **Highest Cu grades in the district with an average 29% Cu and up to 1.0 opt Au.**

Boss Mine (USGS ore sample):

- **Au +230 oz/ton (opt) and up to 64 opt Pd and 15.0 opt Pd. Copper system overprints the gold and PGEs.**

Boss #11 (Kitchener Shaft):

- **Grab Samples: 30% Zn, up to 12.3% Pb, 0.55% Cu, 0.115 g/T Au, and 711.0 g/T Ag.**

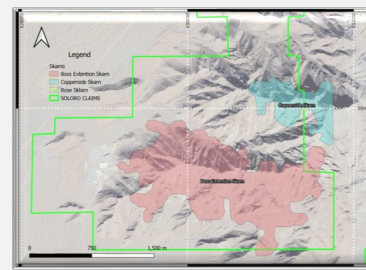
Ironside Fault Au+PGEs Mines:

- Ironside Mine: Main Au occurrence on Ironside fault system. Gold assays to 17 g/T Au+PGEs

Knickerbocker:

- NE Extension of Ironside Fault system
- Channel Sample assayed **4.63 g/T Au**

Priority Targets



1) COPPER CHIEF: PORPHYRY Cu (PCD)-Au

- 2.9 by 1.7 Km Copper Chief PCD/skarn Cu-Mo-Au-Ag targets,
- Cu-Mo-Au-Ag drill intercepts in skarn to the north.
 - Large CRD deposits around it.
- Copper Chief has Cu-Mo-Au skarns and Escape-Valve fault feeders with Au-Cu-PGEs mineralization
- local 2-4% Copper-Moly with Gold-Silver + PGEs,
- outcrop at the surface.

2) SANDY PIPE VEINS:

- Au-Ag-Pd-Pt-Ir-Rh-Ru-Co
- Older, Hi-Grade Sandy fault-controlled Au-Ag-Pd-Pt-Ir-Rh-Ru-Co veins.
- Adjacent to hi-grade Boss Mine.

3) IRONSIDE + Knickerbocker Mines:

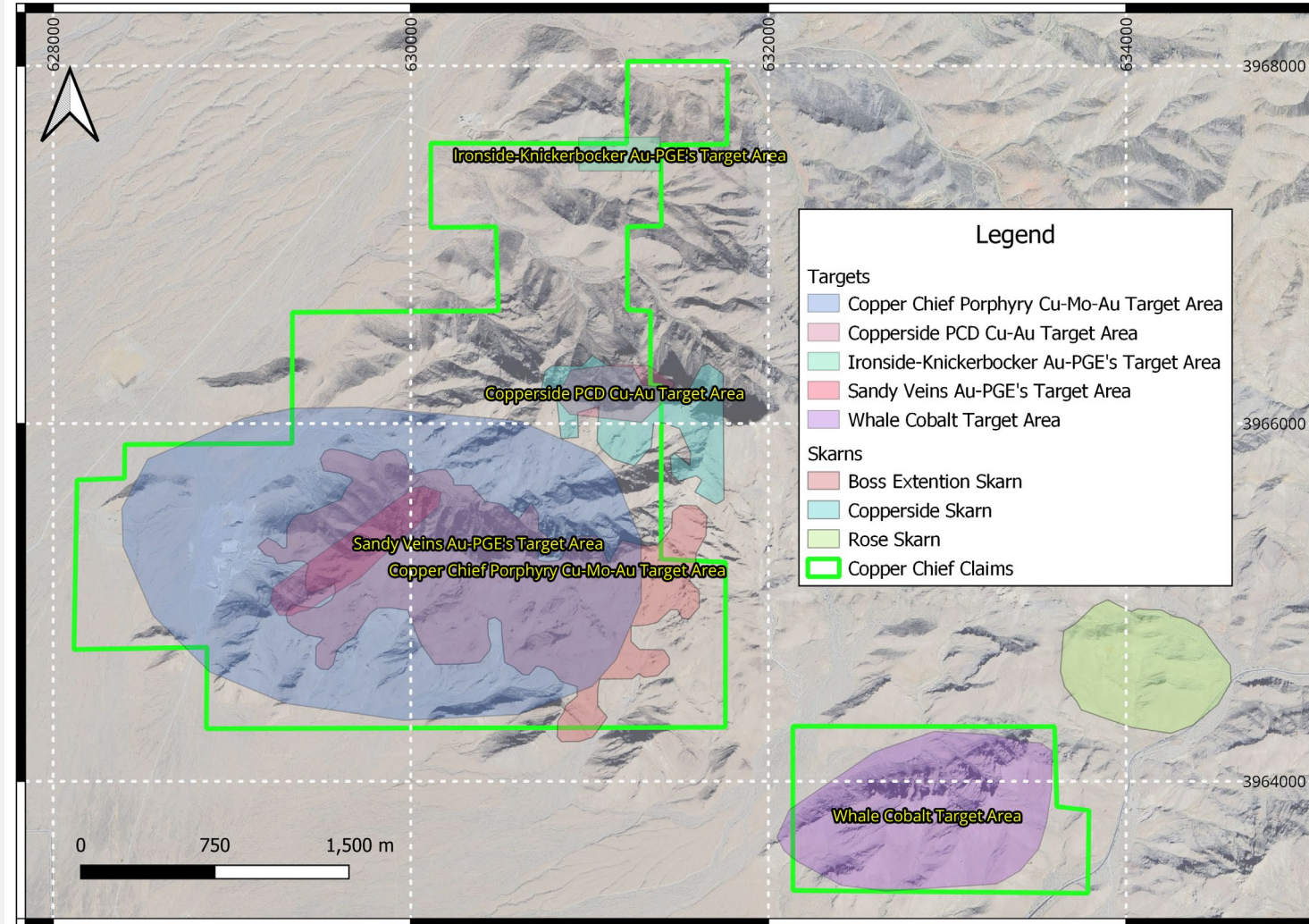
- Au-Ag-Pd-Pt-PGEs-Co veins/pipes along Ironside Faults.

4) COPPERSIDE PORPHYRY Cu+Au:

- High-grade Manto Cu-Au mine

5) WHALE COBALT:

- High-grade Whale Mine Cobalt-Cu target:
- I.P. replacements or blankets



Historic Mine Sampling

Boss Mine:

- Copper: Up to 5.95%
- Gold: Up to 230 opt
- Silver: Up to 51.5 g/T
- Platinum: Up to 15 opt
- Palladium: Up to 64 opt
- Sample Lengths: Hand sample to 7.6 m (1.6' to 24.9')

Boss Mine Levels

- Level 5+:
 - 13 Samples, 30 m length, 17 m width
 - **Cu: 1.22%, Au: 0.74 g/T, PGE: 0.83 g/T, Ag: 8.85 g/T**
- Level 5:
 - 69 Samples, 74 m length, 67 m width
 - **Cu: 1.14%, Au: 1.48 g/T, PGE: 1.48 g/T, Ag: 12.90 g/T**
- Level 4:
 - 46 Samples, 83 m length, 51 m width
 - **Cu: 0.52%, Au: 0.68 g/T, PGE: 1.04 g/T, Ag: 2.79 g/T**
- Level 3:
 - 59 Samples, 130 m length, 75 m width
 - **Cu: 1.11%, Au: 0.64 g/T, PGE: 0.30 g/T, Ag: 3.41 g/T**

Oro Amigo Mine Levels:

- Upper:
 - 12 Samples, 40 m length
 - **Cu: 1.65%, Au: 0.29 g/T, PGE: 0.97 g/T, Ag: 0.35 g/T**
- Middle:
 - 43 Samples, 100 m length
 - **Cu: 0.38%, Au: 0.50 g/T, PGE: 1.73 g/T, Ag: 0.18 g/T**
- Lower:
 - 10 Samples, 20 m length
 - **Cu: 0.77%, Au: 1.45 g/T, PGE: 0.41 g/T, Ag: 8.42 g/T**
- SW Adit:
 - 2 Samples, 1.5 m length
 - **Cu: 2.62%, Au: 0.33 g/T, PGE: 0.12 g/T, Ag: 3.20 g/T**

Boss #2 (Azurite Mine) Levels

- Upper:
 - 17 Samples, 32 m length
 - **Cu: 2.20%, Au: 0.74 g/T, PGE: Up to 0.53 g/T, Ag: 12.05 g/T**
- Middle:
 - 14 Samples, 24 m length
 - **Cu: 4.71%, Au: 1.00 g/T, PGE: Up to 7.83 g/T, Ag: 11.16 g/T**
- Lower:
 - 16 Samples, 32 m length
 - **Cu: 1.17%, Au: 0.34 g/T, PGE: Up to 0.23 g/T, Ag: 2.79 g/T**

(Boxxer Gold sampling, DeMatties, 2003)

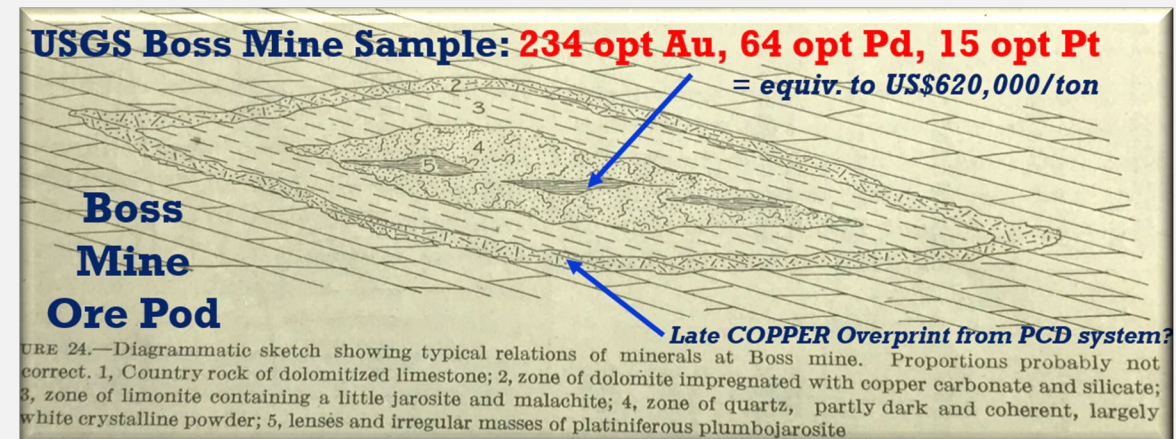
SANDY / IRONSIDE IS ONE OF THE FEW GOOD, UNTESTED, NEVER-DRILLED, GOLD-PGEs TARGETS IN THE U.S.

FAULT ZONES WITH up to **Au +230 oz/ton (opt)** and up to **64 opt Pd and 15.0 opt Pt** were mined at the high-grade BOSS MINE ore pod.

SOLORO re-sampled Ironside 47-02 of Boxxer Gold Assayed with the highest quality Ni-S Au+PGEs fire assays ALS (RSA).

Results were:

6.94 g/t Au
 74/97 g/t Ag
 1.16 g/t Pd
 0.88 g/t Pt
 59 ppb Iridium, 44 ppb Rhodium
 43 ppb Ruthenium, 16 ppb Osmium
 552 ppm Cobalt



Sandy Pipe Vein Target/Sampling

SANDY PIPE-VEINS:
Cu-Au Escape-Valve
Feeders *and older Au-*
Ag-Platinum Group
Element pipes

- **ALTERED MARBLE CAP**

The town of Sandy Valley
(in the distance)

Helicopter for Scale

HIGH Cu-Au GRADES:

- Copper-Au-Ag-PGEs
- Mineralization leakage into NNE trending Ironside fault system
- Parallel to fault zones East of Boss Mine

Rock Sample:

- **Sandy North (SBG19-15):**
 - to 2 sq meters @ **2.98% Cu, 2 g/t Au, 0.743 g/t Pd+Pt;**
Chalcocite Cu

Rock Chip:

- **Sandy South (SBG19-16):**
 - 4 sq meters @ **4.49% Cu, 1.16 g/t Au 0.33 g/t Pd+Pt,**
Silicified Carb
Malachite+Chrysocolla

**Copper Skarn
exposed at the
surface.**

August 5, 2021

James L. Wright M.Sc., with *Wright Consulting*, interpreted historic geophysical surveys on the NW part of the district.

Including:

1991 Airborne
Electromagnetic /
Magnetic /
Radiometric Survey

From 2021 Report:

*“Most compelling of the various magnetic targets is area one near the Boss Mine. As **Figure 1** demonstrates, the reversely magnetized area is surrounded by numerous mines, suggesting the periphery to the southeast is equally prospective.”*

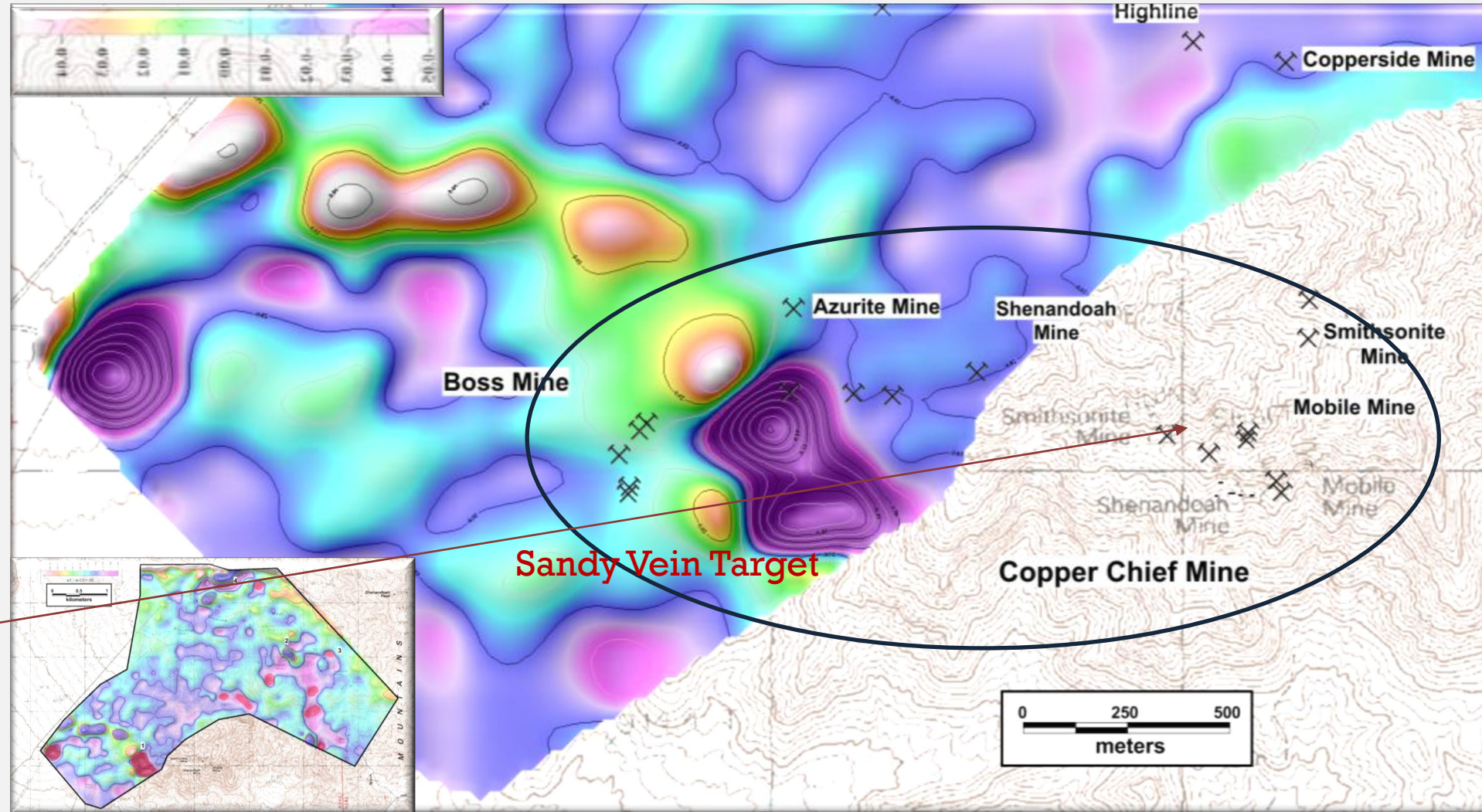
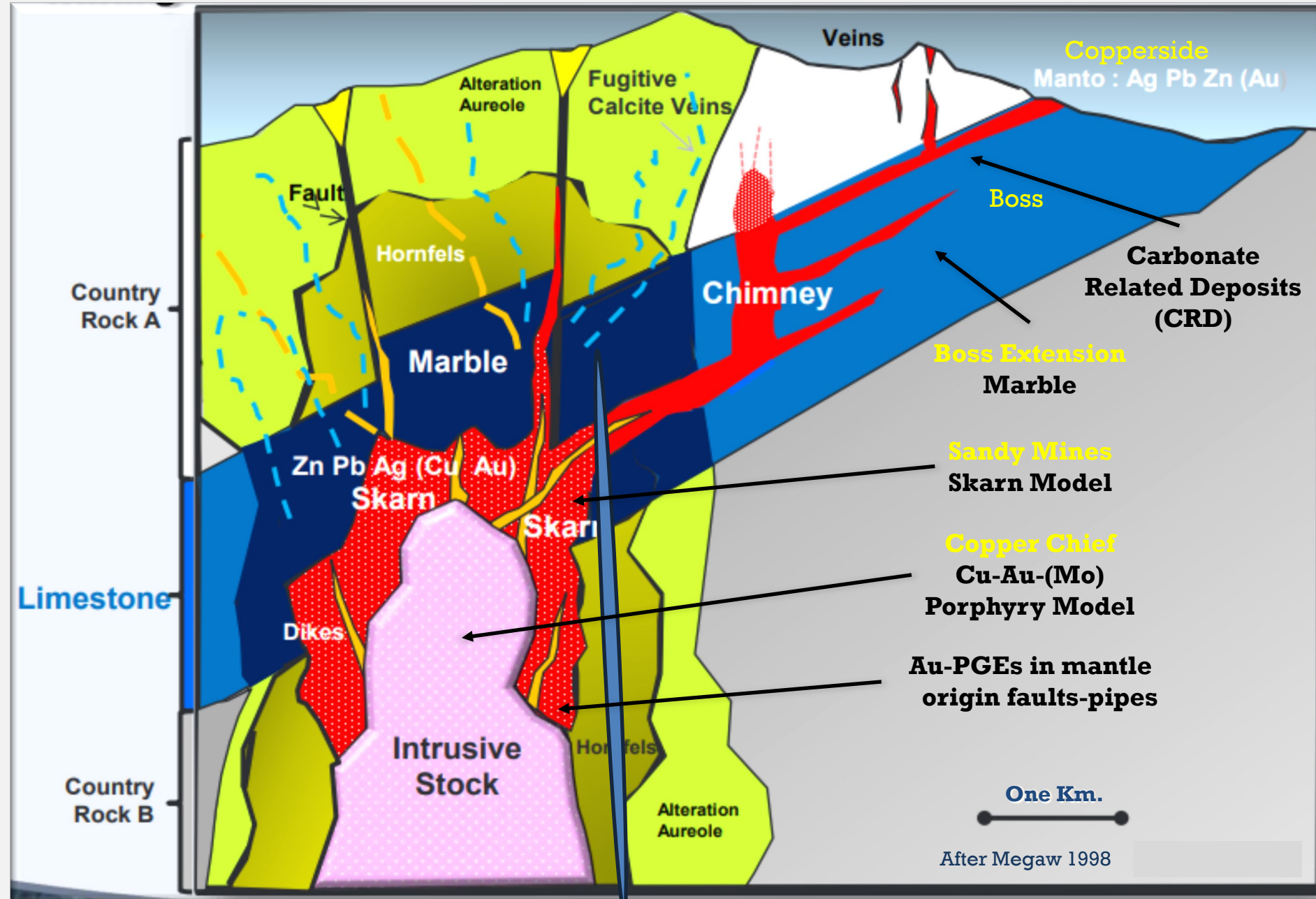


FIGURE 1: RTP Vertical Derivative, Mines over Topography (From 2021 Report)

Copper Chief Porphyry Cu-Au-Mo, Target Model



Main Target:

- **Porphyry Cu-Au-Ag-Mo Copper Chief Porphyry Copper Deposit (PCD)**

Target. Adj CRDs

- **Adjacent Sandy Veins Au-PGEs Target**
- **Au-Ag-Pd-Pt-Ir-Rh targets ready to drill**
- **Adjacent Boss Mine pod produced very high-grade Gold-Ag-Pd-Pt-Cu ores.**
- **Manto deposit at Copperside Mine produced an average grade of 29% Cu up to 1 opt Au.**

Sandy Veins

- Au-PGEs pipe targets next to high-grade Boss Au-Ag-Pd-Pt-Cu Mine.
- Overprinted by Cu system.
- Expanded outcrop sampling campaign

Drone-supported mag survey

- Project wide

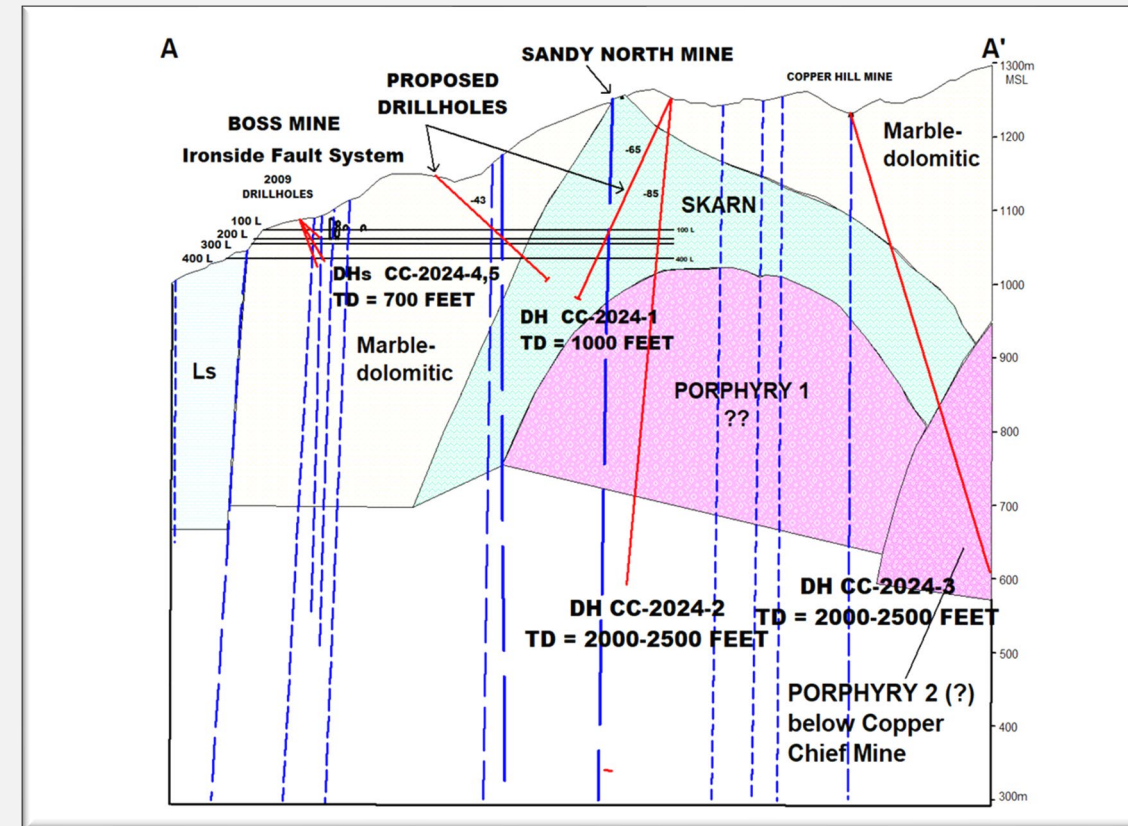
IP surveys

- Over priority porphyry targets

Drilling

- Drillholes 1-5 would focus on Copper Chief PCD targets and high-grade Sandy Gold-Ag-PGEs-Cu fault-pipe vein targets.
- (to be further defined by Geophysics)

Drilling Plan



(Planned 5-hole drilling cross-section)

Disclaimer & Forward-Looking Statements

Disclaimer

Certain statements contained herein, as well as oral statements that may be made by Richard Redfern QP may constitute “forward-looking statements.” Any reference to a “Historical Resource” contained herein is considered historical in nature and as such is based on prior data and reports prepared by previous property owners. Some of the rock chip and drillhole sample assays presented herein are from historical data that may pre-date NI 43-101. Most of the assays were performed by professional, ISO-certified assaying companies. The historical works mostly were conducted under the supervision of a person who is/was a Qualified Person. All of the post 2012 rock chip geochemical analyses were performed by certified assay labs. As such, the historical sampling, assaying and QA/QC protocols are not known, and therefore these results must also be seen and interpreted in an historical context. These data are presented here for historical information purposes only. These data have been studied and verified and felt to be appropriate at this early stage of this exploration project by Richard R. Redfern, MSc. and QP, who has written 43-101 technical reports on mineral properties.

The contents of this presentation, including the historical information contained herein, are for informational purposes only and do not constitute an offer to sell or a solicitation to purchase any securities referred to herein.

Forward looking statements

This presentation includes certain forward-looking statements about future events and/or financial results which are forward looking in nature and subject to risks and uncertainties. Forward-looking statements include without limitation, statements regarding the company’s plans, goals or objectives and future completion of mine feasibility studies, mine development programs, capital and operating costs, production, potential mineralization and reserves, exploration results and future plans and objectives of Inland. Forward-looking statements can generally be Identified by the use of forward-looking terminology such as “may,” “will,” “expect,” “intend,” “estimate,” “anticipate,” “believe,” or “continues” or the negative thereof or variations thereon or similar terminology. There can be no assurance that such statements will prove to be accurate and actual results and future events could differ materially from those anticipated in such statements. Important factors that could cause actual results to differ materially from expectations include risks associated with mining generally and pre-development stage projects in particular including but not limited to changes in general economic conditions, litigation, legislative, environmental and other judicial, regulatory, technological and operational difficulties, labor relations matters, foreign exchange costs & rates.